

Caring for a

TABLE OF CONTENTS

INTRODUCTION 4

CHAPTER ONE:

Introduction

Almost before you knew it was happening, your beloved dog has entered what we humans delicately refer to as “the twilight years.” And for your

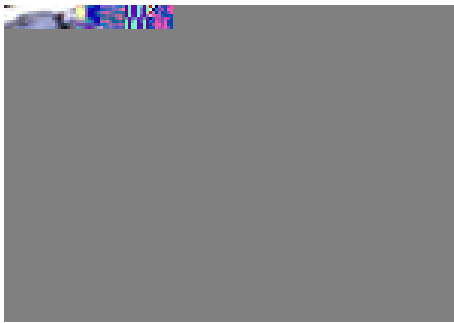
Chapter Two: The Immune System and Aging

Free radicals change the molecular makeup of the cells they come from which they have stolen electrons, so when the DNA in those cells replicates itself during

nausea, weight loss, excessive thirst and urination, and the development of

Vitamin E

Fat soluble Vitamin E is essential for protecting both cellular walls and



preferred treatment is to eliminate both the pain and the source of the infection which has caused the disease so that the teeth are once again firmly

protein cells. Dogs with immune-

for your senior canine, because immune-

and anti-inflammatory to treat arthritis, headaches

Chapter Six: Cognitive Disorders

It's completely natural for your dog to lose a step or two mentally as he or

Now is the time to stay with your dog when he or she is outside, perhaps using a leash at all times. If your dog becomes totally blind, you'll have to do an honest assessment of your pet's quality of life. Some dogs have a temperament which lets them adjust quite well to a dark world but many find it stressful in the extreme. For those animals, creating a stable environment and a regular daily routine is essential.

Chapter Eight: Skin Disorders in Older Dogs

Chapter Nine:

A study performed on two dozen Boxers with heart arrhythmias at the at
Tufts University's Cummings School of veterinary medicine, for example,

your pet's diet will also reduce the amount of flatulence he or she experiences.

protein into energy, and if a diet contains more protein than your dog really needs, the already stressed liver is doing unnecessary work. You'll be much

Chapter Eleven: Tumors and Cancer

Cancer is the number one killer of older dogs, with over forty percent of all dogs developing and dying from it. Realizing that, you may be in the throes

Unwillingness to exercise

some forms of mammary cancer can affect the breast tissue closest to the

Conclusion

Resources

Helpful Links

Mar Vista Vet

